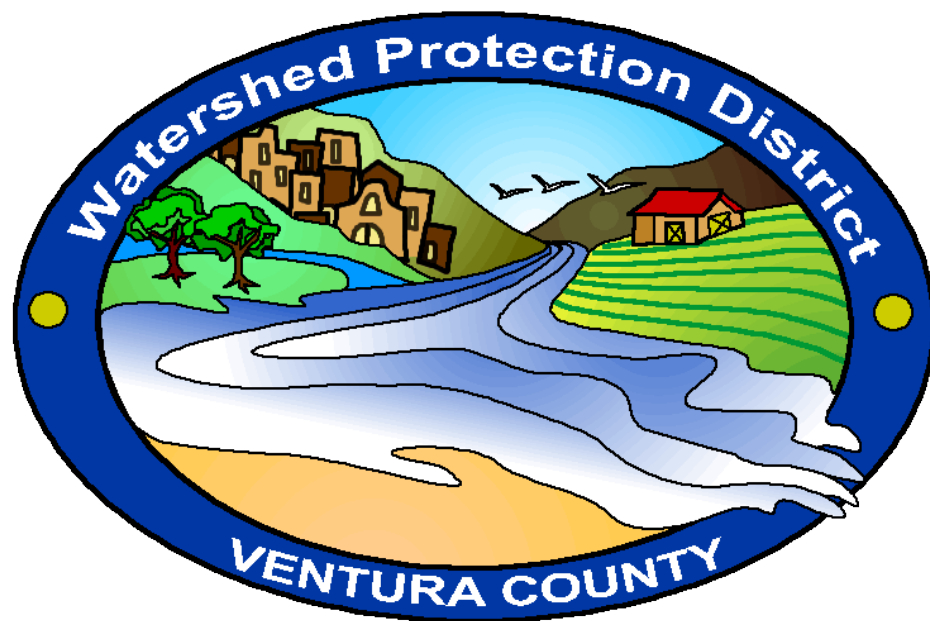




Watershed Protection District





Watershed Protection District Mission Statement

The Watershed Protection District Mission Statement:

To protect life, property, watercourses, watersheds, and public infrastructure from the dangers and damages associated with floods and storm waters

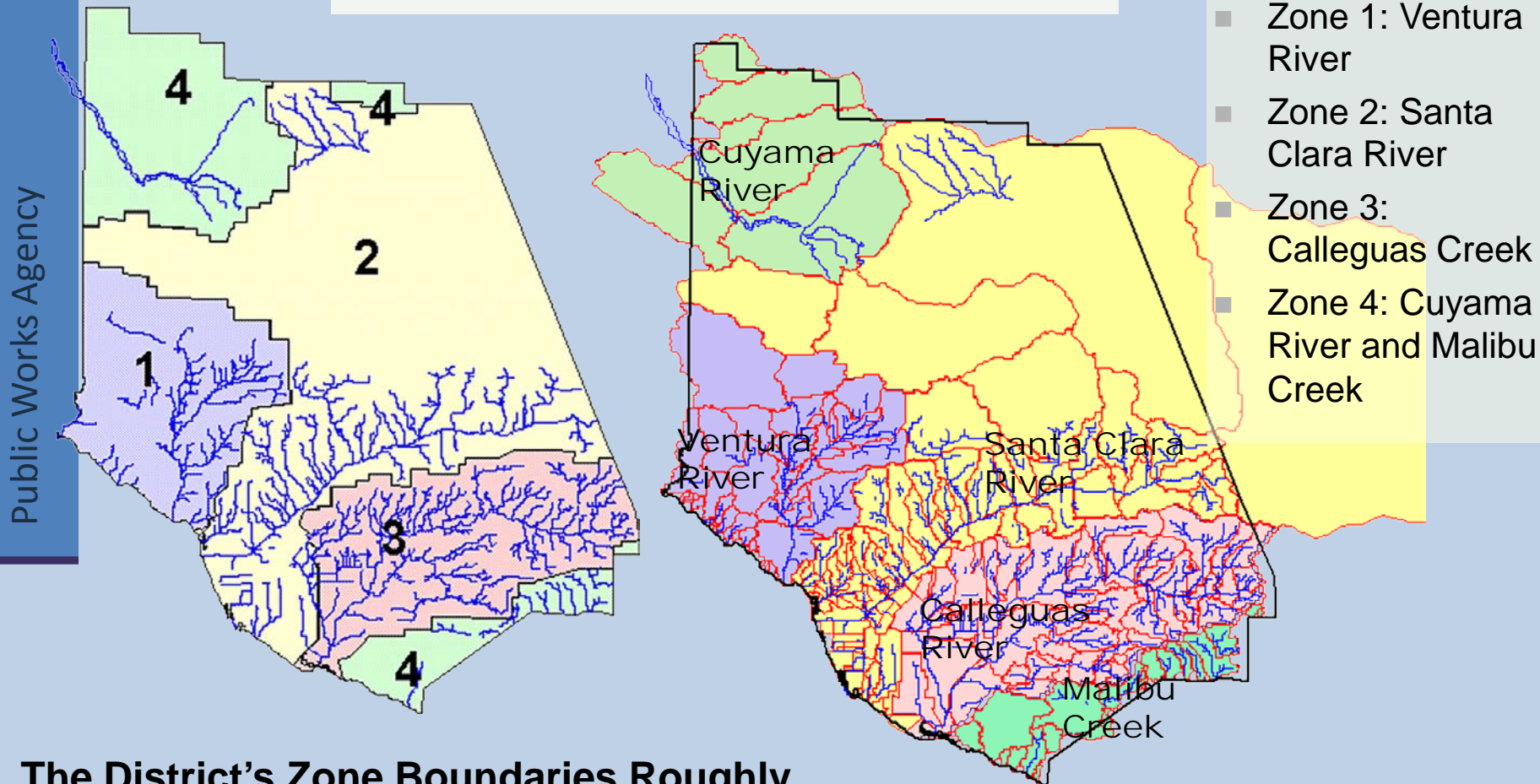




Watershed Protection District

Zones

WPD Zones vs. Watersheds



The District's Zone Boundaries Roughly Follow the Natural Watershed Boundaries



Watershed Protection District Functions

- Protection of Infrastructure Assets:
 - 204 Miles of flood control channels
 - 61 Miles of levees
 - 44 Debris and detention basins
 - 4 Pump stations
- Major Programs:
 - Routine Operations and Maintenance
 - Capital Improvement Program
 - Countywide Stormwater Program
 - Dam and Levee Safety Programs
 - Environmental Restoration





Watershed Protection District Functions

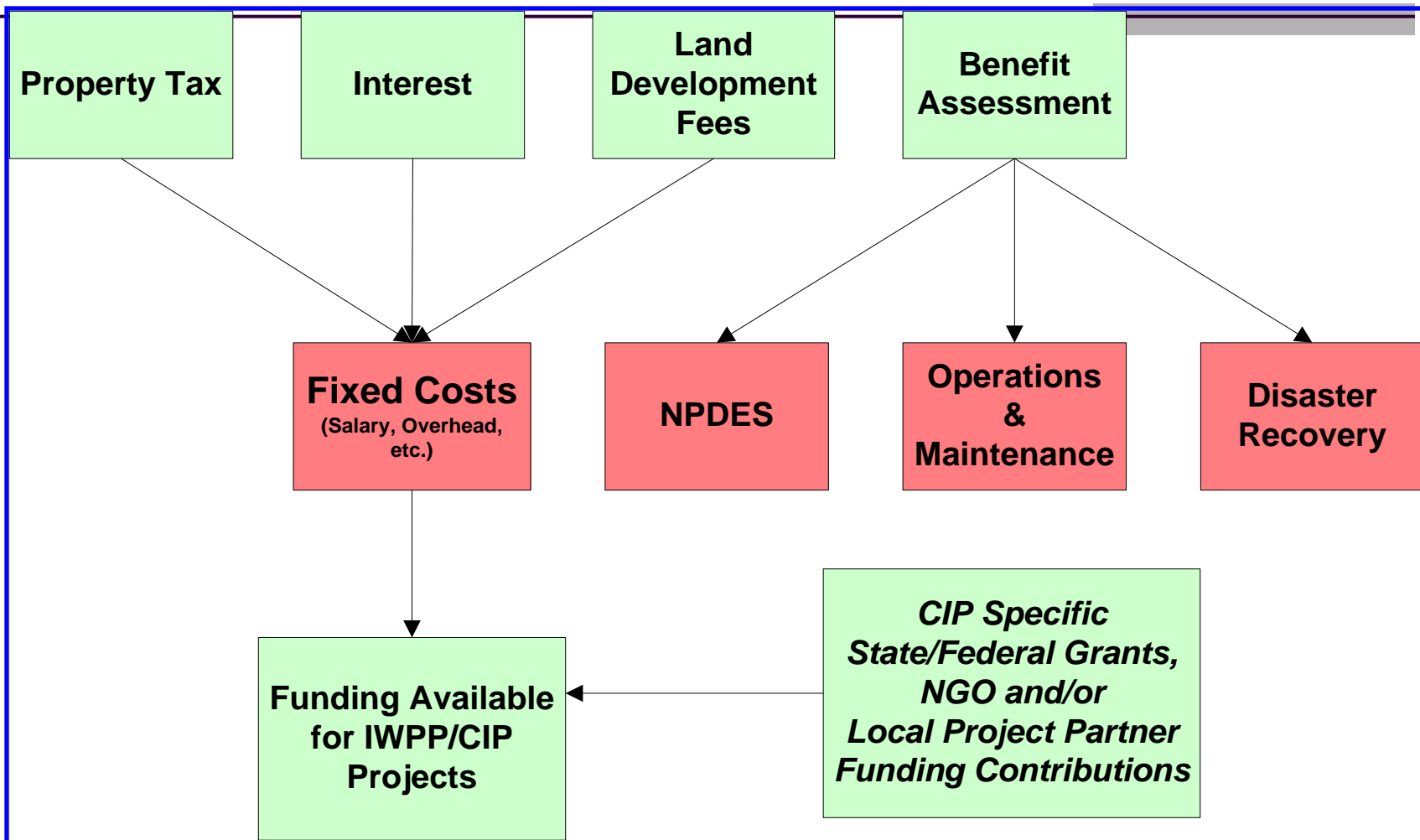
- Major Programs (cont'd):
 - Integrated Watershed Protection Planning
 - Floodplain Management
 - Fox Canyon Groundwater Management Agency
 - Permitting
 - Storm Operations Center and Emergency Response





Watershed Protection District Revenue Sources

Public Works Agency





Watershed Protection District Continuing Challenges

- **Balance economic and environmental objectives**
- **Modernize aging flood protection infrastructure to ensure performance and meet changing needs – flat revenue sources hampers abilities**
- **Enhance WPD ability to respond to disasters such as fires and floods-** apply state of the art technology to predict and respond to hot spots
- **Implement efficient and effective watershed protection planning, decision making, and management**
- **Maintain world class public policy and engineering expertise with effective and ongoing public consultation**

